



## OWNER'S HANDBOOK



Your motorhome makes use of many complex systems and services.

Please ensure that you have read all instruction manuals carefully, and fully understand all aspects of your vehicle, before driving it on the open road.

If you have any queries on the operation of any part of your motorhome please contact your supplying dealer.

Complete the details below:

Model: _____	Name: _____	Telephone: _____
_____	_____	_____
Date Purchased: _____	_____	_____
_____	_____	_____
Supplying Dealer: _____	_____	_____
_____	_____	_____
Sales Person: _____	_____	_____
_____	_____	_____
Telephone Number: _____	_____	_____
_____	_____	_____
Tyre Pressure: _____	_____	_____
_____	_____	_____
Radio Code: _____	_____	_____
_____	_____	_____
Exterior Door Key Number: _____	_____	_____
_____	_____	_____
Water Filter Key Number: _____	_____	_____
_____	_____	_____
Vehicle Build Number: _____	_____	_____
_____	_____	_____



**F-LINE**

Trigano House, Genesis Way, Europarc,  
Grimsby, North East Lincolnshire, DN37 9TU, United Kingdom.  
Tel: +44(0) 1472 571000 Fax: +44(0) 1472 571001  
e-mail: [sales@auto-trail.co.uk](mailto:sales@auto-trail.co.uk)  
[www.auto-trail.co.uk](http://www.auto-trail.co.uk)

Useful Information .....	3-4	Thetford duplex oven/grill .....	22-23	Security and Ventilation .....	43-47
Introduction .....	6-7	Thetford K1520 Cooker .....	24-25	General Care .....	48-50
Preparing for the Road .....	8-9	Thetford N4000 Refrigerator .....	26-27	Winter Laying Up .....	51
External Features .....	10-11	Dometic RM8501 Refrigerator .....	28	Good Neighbour Guide .....	52-54
Driving your Motorhome .....	12-13	Truma Combi 4E/6E .....	29-33	Annual Check List .....	55-59
Selecting a Pitch .....	13	Whale heat air space heater .....	33-36	Guarantee & Aftercare .....	60-61
Gas Services .....	14-15	Whale expanse water heater .....	37-38	Vehicle Specifications/Tyre Pressure .....	62-63
Electrical Services .....	16-18	Water services .....	39	Troubleshooting Combi Gas Heater Guide ...	64-65
Leisure Battery .....	19	Thetford Cassette Toilet .....	40		
EC176 Power Control System .....	20	Windows and Skylights .....	41		
EC362 Control Panel .....	21	Electric bed .....	42		



Tribute/Imala welcomes you to the ranks of Tribute/Imala owners.

This handbook has been designed to enable you to derive the maximum benefit and enjoyment from your motorhome; its information will be beneficial to experienced and new motorhomers alike.

Thank you for deciding to buy one of our motorhomes and welcome to the ranks of Auto-Trail owners.

This handbook has been designed to enable you to derive the maximum benefit from your motorhome; it's information will be beneficial to both experienced and new motorhomers alike.

The information contained in this handbook is intended to give you a general guide as to the care, use and maintenance of your vehicle. We would advise you to read all

of the individual appliance instructions that will be found in the information wallet supplied with your vehicle prior to using them for the first time.

Your motorhome is designed to give many years of use as a leisure purpose vehicle and not as a permanent residence. Regular maintenance however will not only ensure trouble free service, but will also enhance your vehicles value.

Your supplying dealer is responsible for all aspects of your customer care.

We would suggest that you make a note of the dealers name and contact information in the dedicated space in the front of this handbook as this would speed up the process of answering any queries you may have. Should you require assistance, your supplying dealer is fully conversant with the correct procedures that should be followed to get any issues resolved in a timely manner.

For total piece of mind all Auto-Trail vehicles are supplied with a comprehensive warranty. Please ensure that your supplying dealer has fully explained all aspects of the terms and conditions of your vehicle warranty and the necessary servicing requirements.

Please refer to the base vehicle handbook for matters relating to the motorhome as a road going vehicle (e.g. lubricant levels, service intervals etc...).

### Notes on private exporting of vehicles

Auto Trail Motorhomes are designed and manufactured to operate in a specific country or region and therefore it is imperative that when purchasing a new vehicle, the buyer should be completely aware of the design and operating parameters of the product. Vehicles purchased in the UK are not only built to the necessary European Directives and Standards (e.g.

ECWVTA – Type approval), but also are equipped with components that are designed to operate in a typical European temperate climate.

Should a customer choose to export a registered vehicle from the UK, or purchase a vehicle from a nonaligned dealership outside the UK, it is their responsibility to ensure that any required modifications have been completed to the correct standard, and that the vehicle complies with all legislation of the country in which the vehicle is to be registered. Any equipment that is operated in a country that it is not designed for will either not perform correctly and could possibly fail. This equipment may also not be covered by the appliance manufacturer's warranty.

Similarly, Auto-trail vehicles are designed to be used on normal tarmac roads, with occasional off road campsite use. Should a vehicle be used outside of these conditions, the vehicle could suffer undue load, stress and ingress of debris and therefore Auto-trail will not be held liable for any such failure and as a result any applicable warranty will be void.

### Modifications To Your Vehicle

Please check with your supplying dealer before carrying out any modifications to your vehicle.

Any unauthorised modifications carried out by a third party could affect the terms of your warranty agreement.

We would always advise that you consult your dealer before any additional equipment is fitted to your vehicle to ensure the appropriate fixing support is available.

### Appliance Maintenance

In the interest of safety, replacement parts for an appliance shall conform to the appliance manufacturers specifications, and should be fitted by him or his authorised agent.



## Preparing For The Road

### Preparing For The Road

#### Loading Your Vehicle

All models manufactured by Tribute are of a well balanced design, the most common causes of poor stability include:

- Poor weight distribution of the weight inside the vehicle.
- Incorrect tyre pressure (always adhere to the tyre pressures stated in the chassis manufacturers handbook. Always inflate to the 'fully laden' condition).

Try to load heavy items down near the floor of the vehicle, between the axles and as evenly as possible side to side.

We would recommend that the table is stored on the floor between the beds if there is no dedicated storage position.

Where a dedicated storage position is available, the table should be retained in this position whilst the vehicle is in motion.

#### Roof Bars

Your vehicle may be fitted with roof side styling bars, these bars are not suitable for carrying any load. Should you wish to fit a roof rack please contact your supplying dealer who will be able to supply you with the relevant information.

Please be advised that the maximum weight that should be carried on the roof is 40kg

**Please be aware that in certain conditions the aluminium roof may become very slippery, please take extreme care should you choose to walk on the vehicle roof.**

#### Bicycle Carrier (If Fitted)

Tribute recommends that if a bicycle carrier is fitted to your vehicle it should be capable of carrying no more than two cycles.

Never exceed the maximum authorised weight that should be specified on the carrier.

#### Tow Bars

Auto-Trail only recommends the fitting of bespoke Witter tow-bars to our vehicles (where applicable). These are the only tow-bars that Auto-Trail have tested and obtained European Type Approval for. Should you choose to fit any other tow-bar it is your responsibility to ensure that you do not contravene any road traffic regulations.

#### Maximum Loading Of Your Vehicle

The weights of your vehicle are stated in the back of this handbook and on the secondary weight plate located in the engine bay of your vehicle.

The secondary weight plate gives the following information.

The serial number of your vehicle which should be quoted in any correspondence with your supplying dealer.

- The maximum authorised weight of your vehicle which must never be exceeded when the vehicle is loaded and in use.
- The gross train weight of your vehicle. This is the maximum combined weight of the actual motorhome fully loaded to its maximum authorised weight, plus the allowance for a trailer. The weight of the loaded motorhome and trailer must never exceed the gross train weight quoted on the weight plate.
- '1' is the maximum authorised weight for the individual front axle
- '2' is the maximum authorised weight for the individual rear axle.
- '3' is the maximum authorised weight of the individual third axle (only used on twin rear axle models).

**Please note that if you add both maximum authorised axle weights together it will normally give you a larger figure than the maximum authorised weight (MAW) – please be aware that the Maximum authorised weight (MAW) must never be exceeded.**

Please take care to ensure that you have allowed for the masses of all items you intend to carry in the motorhome. e.g. passengers, optional equipment, essential habitation equipment and personal effects such as clothing, food, pets, bicycles, sailboards, sports equipment, etc.

#### Before You Set Off In Your Motorhome

- Ensure all articles are stowed securely. Do not store tins, bottles or heavy items in overhead lockers.
- Close and secure all lockers and cupboard doors.
- Secure all bunks.
- Close and secure all roof lights.
- Store main table in transit position.
- Ensure fridge is on 12v operation and set door lock.

## Preparing For The Road

- Close and latch all windows (never drive with windows on night settings).
- Leave all curtains and blinds open to aide visibility.
- Ensure leisure battery is secure.
- Ensure all gas appliances are turned off, that the gas bottles are correctly positioned, secured and turned off.
- Ensure that seat swivels (if fitted) are locked in the forward facing position.
- Ensure entrance step is retracted.





## External Features

**A** Fridge vents  
**B** Side marker lights

**C** T.V. aerial  
(omni-directional, where fitted)

**D** Awning light (where fitted)  
**E** Lockable external access door to toilet waste tank

**F** Rear marker lights  
**G** High level brake light (where fitted)

**H** Lockable fresh water filler



Model shown Tribute F70



## External Features



## Driving Your Motorhome

### Driving Your Motorhome

#### Pulling Away

When pulling away in your motorhome always operate the clutch smoothly, change gears smoothly and try not to jerk the clutch.

#### Motorhome Handling

Please remember that your motorhome is much larger than a standard motor car when carrying out any manoeuvres.

- Allow longer to speed up when overtaking.
- Do not swing out suddenly.
- Carry out all manoeuvres as smoothly as possible.
- Use the nearside wing mirror to check motorhome has cleared obstacle when overtaking.
- Do not bump the kerbs with the motorhome wheels.
- Reduce speed accordingly in strong winds, going downhill or in poor visibility.
- Large high speed vehicles cause air buffeting, extra care must be taken when passing or being passed by a high-sided vehicle.

#### Reversing

Proficiency at reversing can only be achieved with practice and we would recommend that you should first practice in a large open area.

As well as this courses are run by many organisations.

#### Reversing Aid

Your vehicle may be fitted with a visual reversing aid. This aid is designed to assist a drivers attention only during reversing of the vehicle, they are not intended to replace a drivers self judgement. Auto-Trail will not accept any responsibility for any accident caused by a drivers negligence.

#### Navigation Aid

Your vehicle may be fitted with an audio/visual navigation aid. This navigation aid is designed to assist the driver whilst travelling, it is not meant to replace a driver's self-judgement as to the suitability of a specific route for their vehicle. Auto-Trail will not accept any responsibility for any accident caused by a driver's negligence.

#### Changing A Wheel (Where Applicable)

- Ensure handbrake is fully applied and use wheel chocks if necessary to ensure the vehicle cannot move.
- Remove the wheel trims (if fitted). Use the wheel-brace to slacken off wheel nuts on the wheel to be changed.
- Position the jack under the axle or at the appropriate jacking point.
- Jack up the vehicle until the wheel to be changed is just off the ground.
- Remove the wheel nuts and wheel.
- Fit the spare wheel and reverse the above procedure.
- Tighten all nuts equally.

#### Alloy Wheels / Tyre Valves

It is vitally important that when you get replacement tyres fitted to your vehicle the valves that are used are capable of withstanding the high pressures associated with motorhome tyres.

Usually only 'bolt through' steel type valves can withstand the high pressures associated with motorhome tyres.

## Selecting A Pitch

### Selecting A Pitch

#### Driving Abroad

Please ensure that you are familiar with the relevant laws and regulations that apply in the countries in which you choose to travel.

Different mainland European countries have different laws and regulations and it is your responsibility to ensure that your vehicle complies with theses regulations and that you drive within the law.

Do not pitch in a position in which your vehicle will obstruct others coming in.

Try to choose an area that is dry, reasonably level and preferably with a hard base. If you have no alternative but to pitch on a slope, ensure that when you leave you are driving down the slope.

It is always good practice to chock the wheels of the motorhome when parked on a slope or a slippery surface even when the brakes are applied.

In poor site conditions you are advised to try to keep engine revs as low as possible to try to avoid wheel spin and to try to steer as straight as possible.

#### Levelling The Motorhome

Levelling of the motorhome on your chosen pitch must be carried out in both directions for the refrigerator and other equipment to function correctly. Levelling the motorhome should be carried out using proprietary levelling ramps, or boards.



Model shown Imala 730 HB



## Gas Services

### Gas Services

The gas appliances in your vehicle are fed from a gas cylinder that is housed in a sealed cylinder compartment.

Gas flows from the gas bottles via a bulkhead mounted gas regulator. This regulator provides a working gas pressure of 30 m bar (1.5kg of gas per hour).

All appliances installed by Tribute are designed to work within this pressure range.

Please ensure that any additional appliances, not fitted by Tribute, are capable of working within this pressure.

#### Cylinder Compartment

Your vehicle is designed to accept either 15kg or 7kg gas cylinders, this is dependent on the model you have chosen.

The compartment is accessed via a door on the outside of the vehicle. This door is secured by two locks.

The Compartment has low level ventilation to ensure the safe operation of the cylinders and should not be obstructed in any way.

Also please ensure that any additional items stored in this compartment are secure and cannot damage any pipe work or fittings, or block the ventilation.

#### Connecting / Changing A Gas Cylinder

Before you can connect a gas cylinder to your vehicle you will have to obtain the correct type of high pressure hose for the type of bottle you have chosen (different European countries have different connections). This hose should be fitted to the bulkhead mounted gas regulator fitted inside your gas compartment.

- Extinguish any fire, Flame or source if ignition before changing gas cylinders
- Carefully position the gas cylinders into the gas compartment locating the bottle into the retaining devices taking care not to damage any of the pipe work or fittings.
- Tighten the straps that will hold the cylinders firmly into the compartment.
- Connect the high pressure hose to the gas cylinder using a suitable tool. Please ensure that the high pressure hose is connected correctly before opening the cylinder valve.

#### Externally sited cylinders

You are advised that gas cylinders should not be sited outside the motorhome and that gas hoses should never be extended to accommodate this. Hose lengths should be no more than 400mm (+50mm / -100mm).

If gas bottles are to be removed for a long period of time then care should be taken to ensure that debris cannot enter the gas system via the open pipe work.

#### Gas Hoses

Your supplying dealer will advise on the correct type of high pressure hose to connect your gas cylinder to the pressure regulator.

This will depend on the type of gas cylinders you have chosen to carry in your vehicle.

This hose must be replaced at intervals not exceeding 5 years from the manufacturing date marked on the hose, or as recommended in the hose manufacturer's instructions.

Any hose that shows signs of damage or splitting should be replaced immediately irrespective of its age.

#### Gas Safety Valves

Gas flows from the gas cylinder via a bulkhead mounted regulator to a set of safety shut off valves that supply each individual appliance in the vehicle.

The valves allow isolation of a single appliance without affecting the operation of other equipment. Each valve has a symbol fixed to it that indicates which appliance it is supplying.

The location of the isolation valves varies from model to model, and depending on the layout some vehicles may have two individual sets of valves.

Please familiarise yourself with the location of these valves before using your vehicle for the first time.

#### Precautions - If a gas leak is suspected

- Turn off the gas supply at the cylinder using the isolation valve on top of the gas bottle.
- Never search using a match.
- Open all doors and windows to allow any gas to escape.
- LPG has been given a smell by the manufacturers to help with the detection of leaks – check that the gas is not escaping from an unlit appliance.
- Do not operate any electrical apparatus, especially light switches.
- If the leak is not obvious the motorhome should be evacuated and qualified personnel consulted.
- Remember that gas is heavier than air and therefore sinks to the lowest point.
- Keep bottled gas containers outside and protect against frost. If storage inside is the only option then keep away from heat sources.







## Electrical Services

### Electrical Services

All vehicles have both a 12v and 230v electrical system.

The 12v electrical system is supplied by a rechargeable leisure battery that is located in a dedicated battery compartment within the vehicle (locations of leisure batteries varies from model to model so please familiarise yourself with your battery location prior to using the vehicle for the first time).

The leisure battery is charged either by the vehicle alternator when the engine is running, or by the on board battery charger when the vehicle is connected to a suitable mains supply via the hook-up lead supplied with the vehicle.

Connection the mains supply also activates the 230v sockets and 230v lights (where fitted to a vehicle), as well as various mains appliances.

All vehicles utilise a combined power supply unit (PSU) that contains the battery charger, 12v fuses, mains RCD (residual circuit breaker) and MCB's (miniature circuit breakers).

Please familiarise yourself with the location of the PSU unit prior to using the vehicle for the first time (individual specifications of PSU units will be described in more detail later in this section).

#### Connecting The Vehicle To A Mains Supply

Your vehicle is supplied with an orange mains hook-up cable that will connect your motorhome to a suitable power supply on site via the mains hook-up point on your motorhome.

Mains hook-up points vary from model to model so please familiarise yourself with your particular location prior to using your vehicle for the first time.

Your motorhome should only be connected to a supply that meets the requirements of BS7671.

The site warden will hold information regarding the suitability of supply.

- Locate the charger power switch on the PSU unit and switch to the 'OFF' position before connecting the mains supply.
- Connect the supplied hook-up cable (orange cable with blue connectors) to the motorhome and then connect to the mains supply.
- Check the RCD operation by ensuring that the RCD is switched 'ON' (lever in up position). Press the 'TEST' button and confirm that the RCD is turned off (lever in 'DOWN' position).

- Switch the RCD back into the 'ON' position (lever in 'UP' position). If the button failed to operate the RCD seek professional advice from a qualified electrician.
- Check the polarity of the mains supply by locating the Reverse Polarity indicator and ensure that the indicator is not illuminated. If the indicator is illuminated seek advice from a professional electrician.
- Locate the MCB's within the PSU (adjacent to the RCD) and ensure they are all in the 'ON/UP' position. If any MCB's cannot be reset this could indicate a fault or an overloaded circuit.
- Locate the power switch on the PSU and turn to the 'ON' position. The switch will illuminate when turned on.

It is now safe to check the operation of the 12v and 230v equipment.

#### Overseas Connections

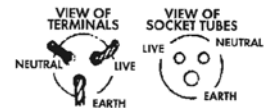
Connection to mains voltage overseas requires particular attention. Electricity supplies abroad may be of reverse polarity. The significance of this is that when an appliance is switched off, it may not be electrically isolated.

It is useful to check the polarity of the supply so that the connection can be made neutral to neutral and live to live as recommended. Your Tribute, however, is fitted with a double pole circuit breaker. Check that all motorhome equipment is set to accept the site supply prior to switching it on.

**Please note that if too many appliances are in operation at one time, the MCB may trip. This is a safety measure. On some sites, the power is not sufficient to power all items. If in doubt, consult the site manager or warden.**

#### Wiring of connecting cable and motorhome mains inlet:

##### Pitch outlet supply



##### Cable plug



## Electrical Services

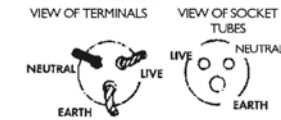
Flexible Wiring		Fixed Wiring
Brown	Live	Red
Blue	Neutral	Black
Green/Yellow	Earth	Green/Yellow

#### Cable coupler



## Electrical Services

### Motorhome mains inlet



The cable plug is connected to the cable coupler by a 2.5mm flexible 3-core cable.

### Warning:

**It is essential that connections are made exactly as shown. If the terminal markings are not in accordance with the diagram, they must be ignored. If in doubt, consult a qualified electrician.**

### Generators

If a generator is fitted, the vehicle must be regularly serviced to achieve the optimum performance. Engine speed is used to govern the output and frequency of the unit in KW and Hz, and if this is allowed to vary beyond a safe level, permanent damage could be caused to certain electronic equipment such as 12v chargers, etc.

### IMPORTANT

**Periodically, preferably not less than once a year, the motorhome electrical installation should be inspected and tested. A report on the condition should be obtained as described in the Regulations for Electrical Installations, published by the Institute of Electrical Engineers. It is important that the main switch at the site point should be switched off, the supply flexible cable disconnected and any cover replaced on the socket outlet at the site supply point. It is dangerous to leave the supply flexible cable connected.**

**If a fault should develop with your electrical system that is not described in the 'fault table' and your supplying dealer cannot resolve the problem, Sargent Electrical Systems operate a telephone help line that is available during normal office hours.**

**Tel: 01482 678981**

## Leisure Battery

Your vehicle is equipped with a rechargeable leisure battery that is located in a dedicated battery compartment within your vehicle.

Locations of leisure batteries vary from model to model, so please familiarise yourself with your battery location before using your vehicle for the first time. The battery is charged via the on-board charging unit when the vehicle is plugged into a mains supply, or via the vehicle alternator whilst your motorhome is being driven.



### Connecting and disconnecting the battery

Please ensure that all cigarettes are extinguished before working in the auxiliary battery compartment.

Switch off all appliances and lamps before disconnecting the leisure battery.

- Release the battery securing bolts or securing straps from the leisure battery.
- Carefully remove the battery from the battery compartment (please take care – the leisure battery is extremely heavy).
- Release the battery terminals using a suitably sized spanner.

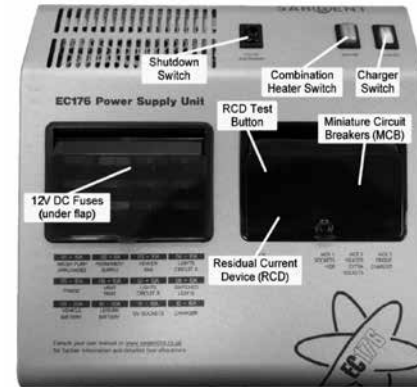
To refit the battery, simply reverse the above procedure.

Please ensure the battery is located safely and securely before driving your motorhome.



## EC176 (Power Control System)

### Component Layout



### Activating the system

The EC176 system has a shutdown feature that should be used when the vehicle is in storage or is not being used for long periods of time, this allows the leisure electronics to be turned off when not required to save battery power. Before using the system please ensure the system shutdown switch is in the on position (button in).

The 12V fuses protect the various 12V circuits within the vehicle

The RDC is used to protect the user from an electric shock should a fault develop, and the MCBs basically act like traditional fuses that will 'trip' if an overload should occur on the protected circuit.

### EC362 Control Panel



**Power button** - press the power button to turn the leisure power on. Press the button again to turn the power off. The adjacent LED will illuminate when the power is on, and also the voltage of the selected battery will be displayed on the screen. When the vehicle engine is running this LED will flash to indicate the leisure battery is being charged.



**Pump button** - with the power on, press the pump button to turn the water pump on. Press the button again to turn the pump off. The



**Light button** - with the power on, press the light button to turn a selection of internal lights on. Press the button again to turn these lights off. The adjacent LED will illuminate when the lights are on. The lights will be turned on and off automatically each time the power button is operated.



**Awning light button** - with the power on, press the awning light button to turn the awning light on or off. The adjacent LED will illuminate when the light is on.



**Levels / scroll button** - use this button to scroll through the various levels screens / menu items or to cancel alarms / warnings.

Note: The screen illumination / backlight will turn off after a period of time. Press the levels button to reactivate the illumination.

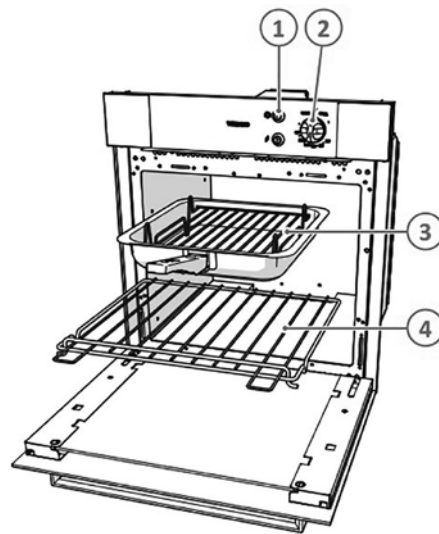


**Select button** - use this button to select options / items or to change settings.



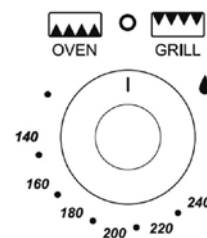


## Thetford Duplex Oven/Grill



- (1) Spark ignition (optional)
- (2) Control knob
- (3) Grill pan
- (4) Oven shelf

### Using the oven/grill



### Turning on the Grill

Open the door and push in the control knob.  
Continue pressing the knob and turn clockwise to the full rate position.  
Push the ignition button.  
Keep the control knob pressed for between 10 – 15 seconds and then release it.  
Adjust to the required heat setting.

### Turning off the Grill

Turn the control now anti-clockwise to the 0 position to turn off the burner.

### Use of the Oven

Open the door and push in the control knob.

Continue pressing the knob and turn anti-clockwise to the full rate position (240°C, gas mark 9).

Push the ignition button.

Keep the control knob pressed for between 10 – 15 seconds and then release it.

Adjust to the required heat setting.

### Turning off the Oven.

Turn the control now clockwise to the 0 position to turn off the burner.

### Note:

The grill pan supplied is multi-functional, for use as oven or grill and the handle design allows removal or insertion whilst the pan is in use. Always remove the handle when the pan is in use.

Place the shelf in the required position.







## Thetford K1520 cooker

### K1520 Cooker

The K1520 is fitted with three gas burners, one 230V hotplate and gas oven. The gas burners are fully adjustable between simmer and full flame, and the oven ranges from 130°C to 240°C.

The electric hotplate has six temperature settings. The oven, grill and burners operate off the on-board LPG supply, the 230V electric hotplate can only be used when the vehicle is plugged into a 230V electrical supply.

#### Pan Sizes

Each burner will support pans between 100mm and 200mm in diameter. Care should be taken not to overload the appliance as performance may be reduced. When using small pans the flame should be adjusted so as not to spread beyond the base of the pan as this will reduce the efficiency of the burner.

#### Gas Operation

Before operating the appliance on gas ensure that the valve on the gas cylinder open and that the individual safety valve for the oven is open.

Hinged Glass Lid Please note that the hinged glass lid must be in the upright 'OPEN' position whilst using the oven. Please ensure that all burners and hotplates are turned off before closing the lid.

#### To light the gas burners

- Push in the control knob and rotate to the highest setting.
- Press the electronic igniter on the oven facia to light the burner after the burner has lit continue to press the knob for approximately 10 - 15 seconds.

If the burner has not lit within 15 seconds the control knob should be released and the burner left for at least 1 minute before a further attempt to light the burner is made.

#### To Turn OFF

- Turn the control knob until the line on the control knob is aligned with the dot on the control panel.
- Always ensure that the control knob is in the 'OFF' position when you have finished using the hotplate burners.

Using The Electric Hotplate Before using the electric hotplate, ensure that the vehicle is plugged into a 230V electrical supply and that the isolation switch is in the 'ON' position.

#### Switching ON

- The hotplate control is numbered from 1 to 6.
- To turn it on rotate the knob either clockwise or anti clockwise to the required position.
- Position '1' is the coolest setting, position '6' is the hottest.

#### Switching OFF

To turn off the hotplate, rotate the knob until the line or pointer on the knob lines up with the zero on the control panel.

#### To Light the Grill

- Open the grill door, the door must be left 'open' when the grill is in use.
- Push in the control knob and turn to the highest setting.
- Press the electronic igniter on the oven facia to light the grill burner after the burner is lit continue to press the knob for approximately 10-15 seconds. If the burner has not lit within 15 seconds the control knob should be released and the burner left for at least 1 minute before a further attempt to light the burner is made.

#### To Turn OFF

- Turn the control knob until the line on the control knob is aligned with the dot on the control panel.
- Always ensure that the knob is in the off position when you have finished grilling.

#### To light the oven

- Push in the control knob and turn to gas mark '9'.
- Press the igniter on the oven facia to light the oven after the burner is lit continue to press the knob for approximately 10-15 seconds. If the burner has not lit within 15 seconds the control knob should be released and the burner left for at least 1 minute before a further attempt to light the burner is made.
- Set the control knob to the desired temperature setting.

#### To Turn OFF

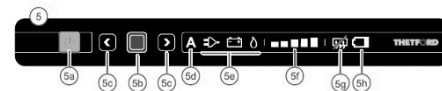
To turn off the oven, rotate the knob until the line on the control knob is aligned with the dot on the control panel.

## Thetford K1520 cooker



## Thetford N4000 Refrigerator

### Thetford N4000 Refrigerator



- 5 Control panel
- 5a On / Off switch
- 5b Confirmation button
- 5c Arrow buttons
- 5d Automatic function (not present on all models)
- 5e Energy sources
- 5f Cooling level indicator
- 5g Anti condensation (only for model B)

#### Switching on the Refrigerator



To switch on the Refrigerator, push the on/off switch and hold it for 1 second, as illustrated. A light on the on/off switch will turn green.

After 10 seconds the settings will dim. The green light indicated the refrigerator is still operating. To check the settings push the on/off switch. The last selected setting will light up.

#### Selecting Source



After switching on the Refrigerator, push the confirmation button and hold it for 2 seconds. The symbols for the sources light up and start to blink.



Chose the desired source by pushing the arrow buttons.



Confirm your choice with the confirmation button.



The Refrigerator is powered from the mains supply



The Refrigerator is powered from the battery of your vehicle



The Refrigerator is powered from the on board gas bottle

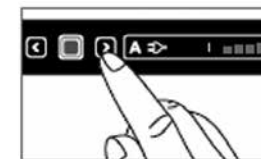
#### Selecting the cooling level



After switching on the refrigerator, push the confirmation button for 2 seconds.



The symbols for the sources start to blink. Push the confirmation button again.



The cooling level indicators start to blink. Use the arrow buttons to choose the desired cooling level.



Confirm your choice with the confirmation button.

Lowest cooling level Highest cooling level

## Thetford N4000 Refrigerator

#### Switching off the Refrigerator



Before defrosting your Refrigerator, or storing your vehicle, switch off the refrigerator. Push the on/off switch as illustrated, and hold it for 2 seconds to switch off the refrigerator. All lights will go out.



## Dometic RM8501 Refrigerator

### Dometic RM8501 Refrigerator



- (1) Power ON/OFF switch
- (2) Energy selector switch button 230V AC
- (3) Energy selector switch button GAS
- (4) Energy selector switch button 12V DC
- (6) Temperature level selection
- (7) Temperature level display
- (8) Indicator LED failure / reset button GAS FAILURE

#### Switching ON / OFF

Switch ON by pressing button (1) for 2 secs  
Switch OFF by pressing button (1) for 2 secs

#### 230V AC operation

Select 'mains voltage' by pressing button (2)  
Set temperature set by pressing button (6)

#### 12V DC operation (vehicle battery)

Select 'battery voltage' by pressing button (4)  
Set temperature step by pressing button (6)

#### Gas operation

Select GAS by pressing button (3)  
Set temperature step by pressing button (6)



#### Electrical operation

To start the refrigerator press button (1) for 2 seconds. The refrigerator will start with the last selected power source.



230V operation press button (2)



12V operation press button (4)

#### Gas operation

Press button (3). The ignition process is activated automatically by means of an automatic igniter.



#### Setting the cooling compartment temperature



Select the desired cooling compartment temperature by pressing button (6). The LED display (7) of the selected temperature is illuminated.

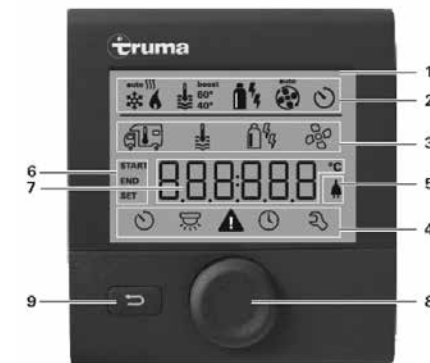
## Truma Combi 4E/6E

### Truma Combi 4E / Truma Combi 6E

The Combi E Gas Heater is a warm air heater with an integrated hot water boiler. The unit can operate on liquid gas (LPG) or 230V mains electricity. The heater can be used in 'Winter' mode that will produce warm air heating and hot water, and 'summer' mode that will produce hot water only.

Before operating the heater for the first time ensure that the 12V system is turned 'ON' on the control panel over the doorway, and that the gas cylinder, and isolation valve are turned on. To use the heater on 230V the Motorhome must be plugged into the mains supply, with the isolation switch in the 'ON' position.

### TRUMA CP PLUS CONTROL PANEL

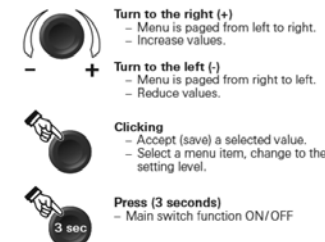


- 1 = Display
- 2 = Status line
- 3 = Menu line (above)
- 4 = Menu line (below)
- 5 = Display of mains voltage 230 V (shore power)
- 6 = Display timer
- 7 = Settings / values
- 8 = Control knob / push

The control knob / push button (8) is used to select menus in the lines (3 + 4) and configure the settings. These are shown via a display (1) with a lighted background. Pressing the Back button (9) takes the user back out of the menu again.

#### Control knob / push button

The control knob / push button (8) is used to select and change set values and parameters; these can be saved by clicking the control knob / push button. Selected menu items will flash.



### Back button

Pressing the Back button (9) takes the user back out of the menu again and discards the settings. This means that the previous values are retained.

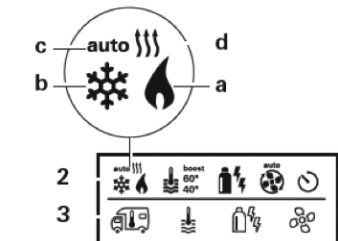
#### Change the room temperature

- Use the control knob / push button to select the symbol in menu line (3).
- Click to change to the setting level.
- Depending on the connected device, use the control knob / push button to select between the heater or air conditioning unit (please note the air conditioning unit is not a factory fitted option).
- Use the control knob / push button to select the required temperature.
- Click the control knob / push button to confirm the value.



### Heater

Settable temperature range 5 - 30 °C (1 °C steps)  
a = heater \* – Heater is switched on.



## Truma Combi 4E/6E

### Air conditioning unit (please note this is not a factory fitted option)

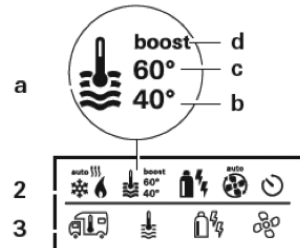
Settable temperature range 16 - 31 °C (1 °C steps)

- b = cool \* – Air conditioning unit is switched on.
- c = auto – Air conditioning unit is set to automatic
- d = hot – Air conditioning unit is in heating mode.

\* This symbol will flash until the required room temperature is reached.

### Change the warm water level

- Use the control knob / push button to select the symbol in menu line (3).
- Click to change to the setting level.
- Use the control knob / push button to select the required level.
- Click the control knob / push button to confirm the value.

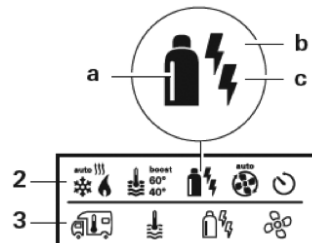


- a = Boiler \* – Warm water boiler is switched on.
- b = 40° – Warm water temperature 40 °C
- c = 60° – Warm water temperature 60 °C
- d = boost \* – Targeted, fast heating of the content of the boiler (boiler priority). The water temperature is kept at the higher level (around 62 °C). Once the water temperature is reached, the room is heated again.

\* This symbol will flash until the required water temperature is reached.

### Select power type

- Use the control knob / push button to select the symbol in menu line (3).
- Click to change to the setting level.
- Use the control knob / push button to select the required power type.
- Click the control knob / push button to confirm the value.



## Truma Combi 4E/6E

### Symbol Operating mode Power type

a	Gas / Diesel	Gas
b	EL 1	Electro
b + c	EL 2	Electro
a + b	Mix 1 *	Gas + Electro
a + b + c	Mix 2 *	Gas + Electro

\* Mixed mode

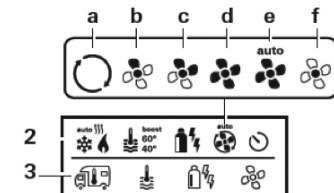
### Special aspects in the mixed mode

Interruption of the power supply 230 V Combi Gas The heater automatically switches to the gas mode. As soon as the 230 V power supply is reconnected, the heater automatically switches back to the mixed mode. Malfunction in the combustion process (e.g. lack of fuel)

Combi Gas The heater automatically switches to the electro mode. If the heater should operate in the mixed mode again, the cause of the malfunction needs to be rectified. Switch the heater off and on again on the control panel.

### Select fan level

When the heater / air conditioning unit is connected:



- Use the control knob / push button to select the symbol in menu line (3).
- Click to change to the setting level.
- Use the control knob / push button to select the required fan level.
- Click the control knob / push button to confirm the value.

### Heater Combi

Symbol Operating mode Description

- Off Fan is switched off.
- a Vent Circulating air, if no device is in operation. 9 speed levels can be selected.
- b Eco Low fan level.
- c Mid High fan level (only Combi Gas).
- d High Fast heating of the room. Available, if the difference between the selected and current room temperature is >10 °C.

### Set timer

- Use the control knob / push button to select the symbol in menu line (4).
  - Click to change to the setting level.
- If the timer is activated (ON), the timer in the menu is shown as deactivated (OFF).

### Enter start time

Use the control knob / push button to set the hours, then the minutes.



### Enter end time point

Use the control knob / push button to set the hours, then the minutes.



If the start / end times are exceeded when entered, the operating parameters are only taken into consideration when the next start / end times are reached. Until then, the operating parameters set outside the timer remain valid.

Set the room temperature

- Click to change to the setting level.
- Use the control knob / push button to select the required room temperature.
- Click the control knob / push button to confirm the value.



Set the warm water level

- Click to change to the setting level.
- Use the control knob / push button to select the required warm water level.
- Click the control knob / push button to confirm the value.







## Vehicle Space Heater Truma Combi 4E/6E

### Truma Combi 4E/6E

#### Select power type

- Click to change to the setting level.
- Use the control knob / push button to select the power type.
- Click the control knob / push button to confirm the value.



#### Select fan level

- Click to change to the setting level.
- Use the control knob / push button to select the required fan level.
- Click the control knob / push button to confirm the value.



#### Activate the timer (ON)

- Click to change to the setting level.
- Use the control knob / push button to activate the timer (ON)
- Click the control knob / push button to confirm the value.



#### Deactivate the timer (OFF)

- Click to change to the setting level.
- Use the control knob / push button to deactivate the timer (OFF)

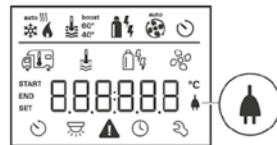


- Click the control knob / push button to confirm the value set time
- The hour display flashes.
- Use the control knob / push button to set the hours (24 h mode).
- After clicking the control knob / push button again, the minute display will flash.
- Use the control knob / push button to set the minutes.
- Click the control knob / push button to confirm the value.



Display mains voltage 230 V

The symbol indicates that 230 V mains voltage (shore power) is available.



### Truma CP

## Warning

This warning triangle symbol indicates that the Combi heater is not currently running due to a requirement of 240 volt Electric or 12volt supply or it is in a cool down procedure.



Once 240 volts is connected or 12volt supply is switch on the Combi will automatically re start.

#### To Read out warning code

- Select the triangle icon with rotary push button.
- Tap the rotary push button.

The current warning code will be displayed.  
The cause of the warning can be determined and remedied with the aid of the troubleshooting guide



W = Warning  
42 = Fault code  
H = Heater

## Vehicle Space Heater Truma Combi 4E/6E

#### Error Code

In the event of an Error occurring the Truma CP plus control panel will immediately displays the error code on the screen.



The cause of the Error can be determined and remedied with the aid of the trouble-shooting guide found at the back of the handbook.

#### Resetting Error code

- Once you have identified and solved the error. i.e. ensuring a good supply of gas etc.
- You then need to tap the rotary button to activate the background lighting and then scroll to warning triangle and tap again to acknowledge the Error.
- The Combi will restart at this point.

If you do not follow procedure and keep pressing the incorrect icons the Cp+ plus will go into safe mode. The fault code flashes in the control panel display, this cannot be reset until up to 15 minutes have elapsed.



Whale Heat Air Space Heater

Whale Heat Air Space Heater



The Whale warm air space heater is designed to provide heating to your motorhome. The heating system includes both an LPG burner and electric heating elements and you can use the system with either LPG, 230V electricity or both.

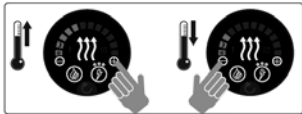
Meaning of the various symbols

Icons	Description
	Gas heating button
	Gas heating standby indicator
	Gas heating on
	Frost protection mode (approx. 5°C)
	Night time mode (approx. 18°C)
	Increase temperature button
	Decrease temperature button
	Lockout indicator
	Electric heating button
	Electric heating standby indicator
	0.75kW electric
	1.50kW electric
	3.00kW electric
	External control from alternative source available*
	External control from alternative source active*
	Reset button

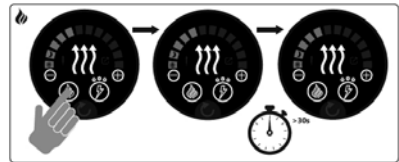
\*Not available on all models

1. Selecting the temperature

Pressing the '+' or '-' button will increase or decrease the temperature on the display.

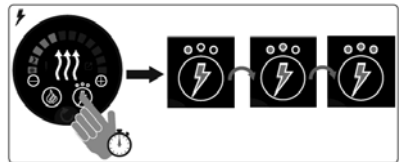


2. Activate Gas Power



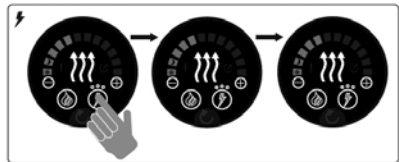
Pressing the flame button will activate the gas power

And / Or 3.a. Select Electric Setting



Pressing the electrical symbol will activate the 230V power.

3.b. Activate Electric Power



Pressing the button repeatedly will change the available power setting.

Useable electric settings

Usable Electric Settings		
6A 0.75kW 230V a.c.		
10A 1.50kW 230V a.c.		
16A 3.00kW 230V a.c.		

Electric power management

When selecting a high electric setting on the space or water heater, the control panel may automatically step down the other Whale space / water heater to a lower electric setting or turn off if at risk of exceeding 16A. The last heater selected has AC mains priority.

Turning the heater off

Pressing the relevant power button until no heat source is illuminated will turn the heater 'off'.

Whale Heat Air Space Heater



## Whale Expanse Water Heater

### Whale Expanse Water Heater



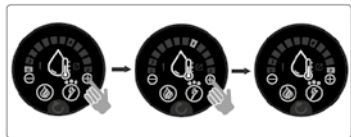
The Whale Expanse water heater is designed to provide hot water to your motorhome. The heating system includes both an LPG burner and electric heating elements and you can use the system with either LPG, 230V electricity or both.

#### Meaning of the various symbols

Icon	Description
	Gas heating button
	Gas heating standby indicator
	Gas heating on
	Frost protection mode
	Eco Mode
	Min temp
	Increase temperature button
	Decrease temperature button
	Lockout indicator
	Electric heating button
	Electric heating standby indicator
	0.38kW electric
	0.75kW electric
	1.50kW electric
	External control from alternative source available*
	External control from alternative source active*
	Reset button

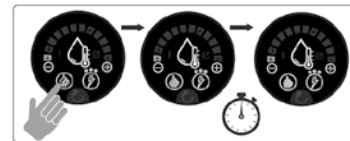
\*Not available on all models

#### Selecting the temperature



Pressing the '+' or '-' symbol will adjust the temperature.

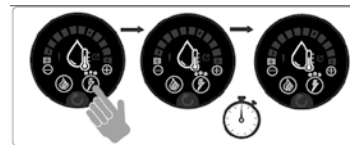
#### Activating Gas Power



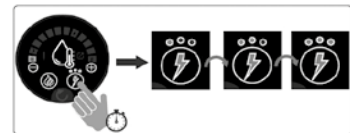
Pressing the flame button will activate the gas power.

#### And / Or

Pressing the electrical symbol will activate the 230V power.



#### Selecting the electric setting



Pressing the button repeatedly will change the available power setting.

Usable Electric Settings *		
1.6A 0.4kW 230V a.c.		
3.3A 0.75kW 230V a.c.		
6.5A 1.50kW 230V a.c.		

#### Electric power management

When selecting a high electric setting on the space or water heater, the control panel may automatically step down the Whale space / water heater to a lower electric setting or turn it off if a risk of exceeding 16 amps. The last heater selected has AC mains priority.

#### Turning the heater off

Pressing the relevant power button until no heat source is illuminated will turn the heater 'off'.

## Whale Expanse Water Heater

#### Frost protection / drain valve

Check the location of the water heater drain valve inside your vehicle and open to fully drain the vehicle water system if it is not going to be used for more than 3 days or if there is a risk of frost.



Closed position



Open position





## Water Services

To completely empty the freshwater tank simply rotate the drainage tap to the open position and the tank will empty.

### Waste Water Tank

All waste water (excluding the toilet) is piped into an on board waste water tank located underneath your vehicle. The volume of the waste water tank will vary depending on which model you have chosen.

When the waste tank becomes full (which will be indicated by a visible and audible signal on the control panel), the tank should be emptied via the drain valve on the outside of the vehicle over a suitable drainage point.

When the 'tank full' indicator sounds there will still be some capacity in the waste tank, but we would advise that it is emptied as soon as possible.

**Please note, care should be taken to avoid foodstuffs entering the waste tank when draining the kitchen sink as this can cause unpleasant odours to enter the vehicle via the sink waste.**

### Fresh Water Tank

Your vehicle has an on board fresh water tank that allows you to carry fresh water with you on your journey. This tank supplies all of the water systems inside your vehicle. The volume of the fresh water tank will vary depending on which model you have chosen.

### Filling The Fresh Water Tank

The tank is filled via a lockable water inlet on the outside of your vehicle.

This inlet is identified by a blue tap symbol adjacent to it (either a blue label or a blue moulding on the filler itself).

The location of the water inlet will vary from vehicle to vehicle so please familiarise yourself with its location before using your vehicle for the first time.

Before attempting to fill your fresh water tank please ensure that the cold water drain tap inside the vehicle is in the closed position (see 'draining the water system' section).

## Water Services

### To Fill

- Remove the cap and insert a suitable length of pipe.
- Connect the other end to a clean water supply.
- Fill the tank until either the water level gauge reads 100%, or until the tank begins to overflow.
- Remove the hose. Replace the cap, lock and remove the key.

### Please note, use only food or drug quality pipe.

Water is pumped from the on board tank by a self priming and cancelling automatic pump throughout the vehicle.

The pump is fitted with an in-line filter to ensure trouble free running. This must be cleaned periodically to ensure that there is no reduction in flow.

The pump automatically pressurises the water system to a pre-determined water pressure, when a tap is opened water flows from it and the pump switches on to maintain the pre-determined pressure.

When the tap is switched off the pump will continue running until the correct pressure in the system is reached, it will then shut down.







## Thetford Cassette Toilet

### Thetford Cassette Toilet

The pump circuit is controlled by the isolation switch on the control panel.

**Please note that if the pump runs on for more than 5-10 seconds after you have closed all the taps, it is possible that there could be a leak in the system. This should be checked immediately. Always switch off the pump at the control panel when leaving the vehicle.**

#### Thetford Cassette Toilet

The toilet is made up of two parts: a permanently fixed toilet and a waste holding tank that is accessible from the outside.

The removable waste holding tank is located under the toilet and can be removed via an access door on the outside of the motorhome.

#### Preparing For Use

- Remove the waste holding tank by pulling the safety catch upwards.
- Pull the waste holding tank outward towards the stop. Tip it slightly and take out the tank completely.
- Place the tank upright and turn the emptying spout upwards.
- Remove the cap (which has a measuring

cup inside) and pour into the tank the required quantity of Thetford toilet fluid. Add approximately 2 litres of water (enough to cover the bottom of the tank). Screw the measuring cap back onto the emptying spout and turn the spout back to its original position.

- Slide the holding tank back into its original position via the access door.
- Make sure that the waste holding tank is secured with the safety catch. Shut the access door and lock it.

#### In Use

- Rotate the toilet bowl to the desired position.
- The toilet may be used with the blade valve open or closed. To open the valve pull the valve handle under the bowl towards you. If the toilet is being used with the blade valve closed run some water into the bowl by pressing the 'FLUSH' button once.

The toilet is now ready for use.

- After use, open the blade valve (if it was closed) and press the 'FLUSH' button. Close the blade valve after flushing.

#### Emptying The Waste Holding Tank

The waste holding tank must be emptied, at the latest, when the warning lamp is lit but it is advisable to empty the tank earlier if possible.

**Do not allow the holding tank to become too full.**

- Ensure that the valve blade is closed. Open the access door outside the vehicle. Pull the safety catch upwards and remove the waste holding tank.
- Carry the tank by the handles to a normal toilet or to a legal waste disposal site. Place the waste holding tank upright and turn the emptying spout upwards.
- Remove the emptying spout cap. Hold the waste holding tank by the upper handle nearest to the emptying spout. Hold the rear handle with your other hand so that you can operate the vent plunger with your thumb. Keep the vent plunger pressed to ensure that the tank is emptied without splashing.

**Please note that the vent plunger should only be pressed when the emptying spout is pointing downward.**

**After emptying, flush the tank and clean the blade valve thoroughly with water. Replace the spout cap and slide the waste holding tank back into the toilet and close the door.**

### Windows & Skylights

Your vehicle is fitted with side windows and skylights to provide light and ventilation to your vehicle.

The number of windows and skylights fitted to your vehicle will depend on the particular model that you have chosen.

#### Windows & Blinds

All windows are opened by rotating the two catches 90° to release from the locking plate, the window will then hinge outward on the top hinge. The window can be held in the open position by means of the locking collar on the telescopic arm.

Please assure all windows are fully closed and locked before driving your vehicle away.

#### Sliding Windows

To open a sliding window simply release the central catch and slide the window open the desired amount.

#### Window Blinds

The habitation windows are fitted with spring loaded night blinds and flyscreens that pull down from the top of the window and lock in position.

## Thetford Cassette Toilet

#### Skylights

Your vehicle is fitted with skylights in the ceiling to allow light and ventilation into the vehicle.

#### Opening The Skylights

The transparent skylights are opened by pushing the handles upwards and opening the dome to the required amount. Closing the skylights is the reverse of the above procedure.

Please ensure all skylights are fully closed and locked before driving your vehicle away.

**Please note - do not leave pleated night blinds in the 'closed' position if the vehicle is being left in storage for any extended period of time.**



## Powered Bed Mechanism

### Electric Bed

#### Powered Bed Mechanism

Your motorhome may be fitted with an electrically powered bed. A touch button control panel allows the bed to move between different heights.

#### Control Panel

The bed is operated from a small aluminium panel with security key and two buttons. The upper button will move the bed upwards, the lower button will move the bed downwards



#### Different Bed Heights

It is important that the bed is only used in a way where the minimum clearance for the occupants can be achieved.



#### Operation of the Bed

- Insert the key into the lock and turn clockwise by 90 °
- Press the top button to raise the bed. The bed will continue to move as long as the button is pressed, and will automatically stop when it reaches the upper limit switch.
- Press the bottom button to lower the bed. The bed will move downwards as long as the button is pressed, or until the bed reaches the lower limit switch.



Once the bed has reached the desired position, turn the key to the OFF position by turning it anticlockwise by 90 ° to the vertical position.



#### Safety Features of the Bed

There are various safety features built into the bed:

- The key to isolate the operation. The key should be turned and removed to prevent unwanted operation.

- 2 limit switches, one high and one low. If the user depresses and holds a button for a longer time than that required for the bed to travel its full extent then, a protection device takes over and disables the movement to protect the motor.
- Fusing of the 12V power supply to the bed. If the bed mechanism encounters any resistance caused by an obstacle or over loading of the bed, the 20amp fuse protecting the bed circuit will blow. This fuse is normally located close to the leisure battery.

The bed-lifting mechanism should only be operated by adults.

#### In Case of Emergency

The electric motor of the bed is fitted with a hexagonal nut which allows manual movement of the bed should the leisure battery have insufficient voltage. The bed can be operated manually by simply inserting a 13mm socket through the access hole in the base of the off-side locker and turning either clockwise or anticlockwise depending on the direction of travel required.

## Security & Ventilation

### Ventilation

Low level ventilation is provided via the entrance step well. High level ventilation is provided by skylights located in the roof of your vehicle.

All ventilation complies with European Standards and vents should not be obstructed in any way as this could lead to insufficient fresh air.

If this occurs then the confined atmosphere can become deficient in oxygen, which can lead to a build up of the highly dangerous gas carbon monoxide (CO).

Carbon monoxide is colourless, odourless and tasteless and if allowed to build up will rapidly cause unconsciousness, and even death.

There is no danger providing all ventilation is not blocked in any way and all meshes are regularly cleaned using a vacuum cleaner.

#### Awning Space LPG Exhaust

No danger is caused if the LPG exhaust from the fridge vents into an enclosed awning. If totally enclosed, space heaters may produce enough exhaust fumes to pollute an enclosed awning to levels of discomfort. In extreme cases carbon monoxide could build up to reach dangerous levels you are advised to allow some additional ventilation when such appliances are in use.

### Roof Mounted Flue Installations

All flue installations should be inspected for corrosion once a year throughout their length. If any sign of perforation is detected, the flue should be replaced. Ensure the replacement flue is of the correct type and that it is installed by an approved engineer.

### Combustible Materials

Care should be taken when storing any combustible materials near any heat source (e.g. space heater) as these surfaces can become very hot during normal use.

### Portable Heaters

Never use portable cooking or heating appliances other than electric heaters that are not of the direct radiant type, to heat your vehicle as it can be a fire and asphyxiation hazard.

Under no circumstances should a cooking appliance be used for heating the vehicle.

### Warning

**Please note that internal socket outlets should only be used with dedicated appliances.**



## Security & Ventilation

### Security & Ventilation

**No appliance should be used outside the motorhome whilst connected to an internal socket.**

#### Fire And Safety Precautions In Case Of Fire

Please read all warning notices inside your motorhome advising you on fire prevention, ventilation and what to do in the event of a fire.

If a fire should develop in your vehicle please observe the following;

- Get everybody out of the motorhome as quickly as possible.
- Call the fire brigade.
- Turn off the gas bottle isolation valve if safe to do so.
- If possible and safe to do so, remove the gas cylinders and place some distance away from the vehicle.
- If it is an electrical fire, always turn off the supply as quickly as possible.
- Only tackle the fire if you deem it safe to do so.



#### Fire Extinguisher

Your vehicle is fitted with a fire extinguisher for use in the event of an emergency.

The location of the fire extinguisher will vary from model to model so it is important that you familiarise yourself with its location before using your vehicle for the first time.

Please refer to the instructions printed on the actual extinguisher for guidance as to the correct use of the unit, and the maintenance schedule that should be adhered to.

Please ensure that you are confident as to the location and operation of the fire extinguisher before using the vehicle for the first time.

#### Smoke detectors

Your vehicle is fitted with a battery operated smoke alarm that will emit a loud pulsating tone should smoke be detected in your vehicle.

#### Operating the smoke alarm

Once the battery is connected a small indicator light (LED) positioned near the test button should flash approximately once every minute.

This indicates that the alarm is operating normally.

### Security & Ventilation

#### Testing your smoke alarm

It is recommended that you test your smoke alarm once a week to ensure the detector is working correctly.

- Push and hold the "TEST" button for approximately 3 seconds.
- A loud pulsating alarm should sound to indicate the detector is functioning correctly.
- During the alarm condition the LED indicator will flash quickly.

#### Maintaining your smoke alarm

If the smoke detector emits a short beep once a minute the battery is at the end of its life and should be replaced immediately, this low voltage warning will sound for approximately 7 days.

We would always recommend that the battery is replaced at least every 12 months to ensure correct operation.

If the LED indicator does not flash every minute then the battery should be replaced immediately as this will indicate that the battery is completely flat.

Clean your smoke alarm regularly to prevent dust build up. This can be done using a vacuum cleaner with a brush attachment.

#### Carbon monoxide alarm

Your vehicle is fitted with a battery operated Carbon monoxide detector it will detect carbon monoxide in your motorhome if it should rise to dangerous levels and sound the alarm.

#### Operating the Carbon Monoxide alarm

Once the batteries are connected small power indicator light will flash green once a minute to indicate that the unit is receiving power from the batteries and is operational.

#### Testing the sounder, batteries and circuitry

Test the sounder, batteries and circuitry by pressing and holding the test / rest button for 1 second to confirm that the detector is operating properly. The sounder should sound as soon as the button is pressed, and the Alarm LED will illuminate red, indicating that the sounder is working and the batteries are providing power to the unit. This test for the sounder, and batteries should be performed weekly.

#### Maintaining your detector

- Test the sounder, batteries and circuitry of your detector once per week by pressing and holding the test / reset button for one second.

## Security & Ventilation

- Keep the detector free from dust by gently vacuuming with a soft brush
- We would recommend that you change the batteries in your detector at least every 12 months to ensure correct operation. The unit continually checks the settings of its sensor and circuitry. If any of these settings are found to be incorrect or if the batteries have become low then the detector will emit a single audible chirp once per minute for up to 30 days. Important: This does not mean that the detector has detected carbon monoxide.

Note: The sensor used in the detector has a lifetime of seven years after activation. After this seven year period the entire unit should be replaced with a similar model.

## Security & Ventilation

### Escape Paths

It is important that you do not block any escape paths or emergency exits with any obstructions that could hinder your escape in an emergency. Please familiarise yourself with the designated emergency exits before using your motorhome for the first time.

### Children & Pets

Do not leave children or pets in an unattended motorhome as they could be exposed to hazards that could cause an accident.

### Upper Bunks

Care should be taken against the risk of falling out when this bunk is used by children. We would advise that the upper bunks are not suitable for children under six years of age without supervision.

### Security

At Tribute we have tried to go further than any other motorhome manufacturer to protect your investment. Make it difficult for the thief by protecting your motorhome and its contents. Always lock all doors and windows when leaving your vehicle, even if it is left for a short period of time.

### Habitation Door

The habitation door in your vehicle utilizes a two point locking system that is operated manually by the door key.

### Manually Locking The Habitation Door

From Inside The Vehicle To lock the habitation door from the inside simply push down the locking button on the inner door handle.

### Entrance Step

Your vehicle may be fitted with an electric entrance step that is designed to assist you when entering and exiting your Motorhome.

The step can be operated manually via a button located next to the habitation entrance door.

The step will automatically fold away when the engine starts to minimise the risk of injury when the vehicle is in motion.

### Operating The Step Manually

The step is operated manually by depressing the step button located next to the habitation entrance door. Pushing the button once will fold the step out, pressing it again will fold the step in.

### Operating The Step With The Central Locking

- Unlocking the cab doors with the remote key fob will fold the step out.
- Locking the doors with the remote key fob will fold the step in.
- Unlocking the vehicle from the internal dashboard switches will fold the step out.
- Locking the vehicle from the internal dashboard switches will fold the step in.

### Please Note

Operating the central locking can also activate the electric entrance step.

**Always ensure that the step is folded out fully before using it, and ensure that no person is standing on the step when the vehicle is locked, either by the key fob or when the engine is started.**



Model shown F72





## General Care

### General Care

#### Motorhome Theft

The theft of a motorhome can occur in the most unlikely circumstances; from a motorway service area, or even from an owners drive.

Make sure all windows and doors are secured even if only leaving the vehicle for a short time and we would advise that you do not leave valuables in easily visible positions inside the vehicle.

#### Motorhome Exterior

The exterior of Tribute motorhomes are finished with a highly polished fibreglass skin. This is a very durable surface and is very easy to clean due to its high gloss finish.

To maintain a showroom finish, wash the motorhome regularly with a mild detergent, rinse off with cold water and leather off. A good quality car wax may be applied which will make washing even easier in the future. Abrasive cleaning agents must never be used to clean the exterior of Tribute motorhomes.

Within the first twelve months cracks and blisters can appear in the surface of moulded GRP components. These are cosmetic only and have no effect on the vehicles structure. These components can be readily repaired using the correct procedure (please refer this to your supplying dealer).

#### Mouldings

All mouldings are powder coated aluminium and will retain their colour and finish for a long time if no abrasive materials are used to clean them.

#### Care Of Windows

The windows in your vehicles are fully double glazed and with care will remain sparkling and scratch free.

Clean your windows as you would your car. Do not use a sponge on dirty windows. When all dirt has been removed, dry with a leather or 'Vyleda' type cloth.

The catches and stays do not need lubricating.



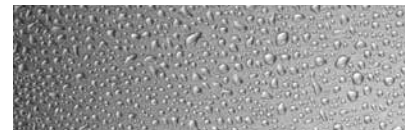
### General Care

Tar can be removed using a proprietary tar remover which is available from most car accessory shops. Do not use petrol or other chemicals without approval.

It is a popular misconception that acrylic motorhome windows are vacuum sealed. This is not so. The windows in a motorhome can, as with domestic glazing, be susceptible to temporary condensation if the temperature difference between inside and outside changes quickly and / or dramatically i.e. if a cold motorhome is heated quickly using the heater or by the sun.

These drastic changes of temperature and the moisture in the air both contribute towards the temporary condensation that will normally disappear as quickly as it appears.

This whole phenomenon is purely related to ambient temperature changes of the motorhome compared to the window cavities.



#### Condensation

Condensation occurs when warm moist air meets a cold surface. The risk of condensation therefore depends upon how moist the air is and how cold the internal surfaces of the vehicle are. Condensation is normally more noticeable during the winter months as the motorhome is cold and because skylights, windows and doors are opened less meaning that the moist internal air cannot escape.

#### How to try to minimise the likelihood of condensation occurring

To try to minimise the risk of condensation occurring it is important to try to maintain some level of ventilation. Your vehicle complies with EN721 which states the minimum requirements for high and low level ventilation, it is very important that these are not blocked or reduced in any way.

#### Try to provide reasonable heating

If possible use the electric element of the space heater when washing, cooking or drying damp clothes, particularly if the windows show signs of misting up.

## General Care

Try to make sure all areas are at least partially heated, condensation most often occurs in unheated areas.

To prevent condensation the heat has to keep the room surfaces reasonably warm.

It can take a long time for a cold motorhome to warm up so it is better to have a small amount of heat for a long period rather than a lot of heat for a short time.

A motorhome that has been left unoccupied for long periods of time can become very cold.

Whenever possible it is best to put the heating on at a low level before setting off on a journey in the winter to pre heat the vehicle.

Even in a well insulated motorhome with correct ventilation it is likely during cold weather if the temperature is less than 10°C that condensation will occur. Ideally the temperature should be kept at about 20°C although this is not always possible.



## General Care

### General care

#### Motorhome Interior Side Walls, Roof Lining and Furniture

A simple wash with a damp cloth and a mild detergent is all that is necessary.

#### Soft Furnishings

Carpets should be vacuumed occasionally to remove grit and sand. This helps maintain good appearance and ensure long life.

The upholstery can be cleaned with a mild reputable upholstery cleaner.

It is recommended that curtains be dry cleaned.

#### Cupboard Catches

It is advisable to lightly oil cupboard catches, sliding bolts and hinges from time to time.

#### Vanity Unit / Shower Cubicle

Your vehicle is fitted with a plastic vanity bowl. Do not pour very hot water into it as it is made from a moulded polymer that may deform, always put cold water in first.

#### Care of Plastic Components

The cleaning of any plastic components in the vehicle, e.g. shower tray, should only be undertaken with mild soapy water.

General household cleaning products should not be used as they may cause the plastic to go brittle and crack.

Tribute will not be held responsible for any replacement if it suspected that this was the case.

#### Plated Fittings

These should never be cleaned using abrasive cleaners. Clean with a damp cloth and polish with a dry cloth only.

#### Natural Wood Worktop Edges

Should your vehicle worktop edges show signs of the lacquer breaking down, they should be re-sealed using a proprietary yacht varnish (or equivalent).

### Winter Laying up

The following tips will be helpful for the periods when your motorhome is not regularly used.

It applies if you store in a compound away from home, or in your own drive.

#### Tyres

Care should be taken to ensure that your vehicle is not stored with slightly deflated tyres as this could cause damage to the side walls that could lead to an accident when driving at speed.

Ideally you should rotate your wheels every couple of weeks to try to eliminate flat spots developing.

#### Water System

It is important that the water system is drained off during the winter months to avoid freezing when the motorhome is not in use or after the last trip of the season. Failure to do this could result in serious damage to components.

#### To Drain Off

- Open the drain valve on the fresh water tank to ensure it is fully empty.
- Open the drain valve on the waste tank to ensure it is fully empty (only drain into a suitable container).
- Open all taps inside the vehicle and leave open.
- Open the drain valve inside the vehicle to empty the water heater and empty the pipe work inside the vehicle.
- Allow the vehicle to drain in this way for five minutes, then run the pump to ensure it is free of water.
- Empty cassette toilet (see manufacturers instructions).

#### Soft Furnishings / Furniture

It is recommended that the upholstery is removed from the vehicle if at all possible during winter storage to avoid damp. If this is not possible then it should be stood on its end to allow as much air as possible to circulate.

Leave all cupboard doors open to allow the maximum amount of air to circulate around the vehicle.

#### Window Blinds

Window night blinds should not be left in the 'closed' position for long periods as this may affect their folding back into the 'open' position.

#### Bringing Your Vehicle Out Of Storage

Before starting to use your motorhome after a long storage period we would recommend that you have all gas and 230v electrical services checked by a competent person.

We would recommend that the water system is flushed through with a sterilising solution prior to the first use of the motorhome.



Model shown Imala 730HB



## Motorhome Owners' Good Neighbour Guide

### Motorhome Owners' Good Neighbour Code

#### At A Camp Site - On Arrival

Park as close to the reception area as possible and report your arrival.

Do not drive to a pitch and park unless directed by reception staff.

#### Vehicle Movement Around The Site

Always keep to the site roads unless directed otherwise. Obey the speed limits, these are generally 10 mph.

**Please note that stopping distances on grass are greater than on a normal road. You must have a current valid driving licence to drive a vehicle on site roads. Park where directed on your pitch.**

**Where possible you should leave approximately 6m of free space around your vehicle.**

#### Using Site Appliances

- Connect all mains hook-ups correctly and carefully.
- Turn off all fresh water taps completely.
- Use facilities such as toilets and showers with care and consideration, leaving them in a tidy condition.
- Young children should be escorted and supervised.

#### Disposing Of Waste

If your vehicle is not fitted with a waste water tank, place a suitable container under all waste water outlets.

- Do not allow these to overflow.
- Make sure you empty the containers at appropriate waste water points.
- Empty chemical toilets only where directed.
- Avoid damage to sewerage treatment works by using only approved chemicals. Phenols, coal tar or caustic based fluids must never be used under any circumstances.
- Solid bulky items such as disposable nappies, etc. must not be put into the chemical closet emptying point or site rubbish bins. Wrap them in a polythene bag and place in designated containers.
- Household rubbish should be put into the private rubbish collection bins.

#### At A Camp Site - Noise Pollution

Please show consideration by thinking how the noise you create will affect those around you.

Open and close doors quietly.

Control noise made by your children: do not allow them to play with kites, model aircraft, catapults or airguns close to vehicles.

Do not allow them to play loud, boisterous ballgames.

Keep volume turned down on CD players, personal stereos radios and TV's. Do not play musical instruments so loudly that they will upset your neighbours.

If you have a power generator, make sure it is adequately silenced and use it with consideration, especially after dark.

#### Pets

Most site operators do not object to well behaved pets but they should be kept well under control.

- No animal should be allowed to run loose on the site.
- Leads must be no longer than 3m.
- Animals are not allowed in the shower or toilet blocks.

- Dogs must not be allowed to foul sites, roads or green areas.
- Carry a small spade and a supply of plastic bags in your motorhome in order to clean up any mess made by your dog. It is then possible to dispose of it in an appropriate manner.

#### Fire Precautions

Read all fire precaution notices and make sure that you and your family are familiar with the locations of hoses, extinguishers and assembly points.

Barbecues should not be used unless permission has been given. If you are allowed to use a barbecue, use it with care and consideration for those around you.

Open fires are not allowed on campsites.

**Warning Notice**  
**Portable or open flame heating equipment should not be used.**  
**If you have such equipment on board, consider very carefully whether the risks are worth it.**





## Motorhome Owners' Good Neighbour Guide

### Motorhome Owners' Good Neighbour Code

#### Tents And Awnings

It is polite to ask permission before erecting a tent or awning. Permission will normally be granted if the tent is of a recognised standard make and in good condition.

If the stay is longer than a day or two the groundsheet and/or side flaps of the awning should be lifted to avoid unsightly patches or damage to the grass.

#### Leaving The Site

Always tidy your pitch and make sure you do not leave bags of rubbish lying about. Check out at reception, pay your site fees and thank them for an enjoyable stay.

#### Wild Camping

Camping on a non-licensed site without the permission of the landowner is illegal in the UK.

If you do have permission to camp on an unlicensed site, always follow the advice in the code.

Pay particular attention to the following points:

- Dispose of litter only in receptacles provided for the purpose. If there are none, put litter in plastic bags and take it away with you to dispose of in an appropriate manner.

- Control the water waste from your motorhome, do not let it run onto the ground.
- Chemical toilets must only be emptied in an appropriate waste point.
- Do not hang washing or similar items outside your vehicle.
- Do not allow children to climb on fences or walls. Damage to these may allow farm animals to stray into the wrong field.

#### Parking

You should only park your vehicle in an approved place and during the permitted times. Do not use any of your facilities such as cooking or washing in a way that may cause annoyance or inconvenience to those around you.

#### User Manuals

Before using your motorhome for the first time, and at the beginning of each season, read and follow the advice given by the manufacturer and appliance manufacturers in their user handbooks.

#### Protecting The Environment

Always behave and, encourage children to behave, in a manner that protects the environment and other people's property.

Please read and follow the advice contained in the country code and the coastal code.

After many years of use you may decide that your vehicle has reached the end of its useful life and should be disposed of.

Please ensure that you comply with the end of life vehicle legislation and take it to an authorised treatment facility who will deal with it properly to minimise any environmental impact.



## Tribute/Imala Motorhome Annual Checklist

### Tribute/Imala Motorhome Annual Checklist

#### Introduction

It makes good sense to check over your motorhome at least every year.

If you tend not to use it much during the winter months, check it over before storing it.

Any defect, repairs or adjustments can then be made without rushing. At the start of the new season, check and clean the motorhome inside and out, lubricate and top up any systems that may have been missed in the autumn and get ready to enjoy another year of fantastic holidays and weekends away.

#### 1. Body Mounting

##### Body to Chassis

Examine all fixings holding the body to the chassis. These may be direct connections or via sub frame. Check that all fixings are present and tight.

##### Body to Cab

Examine the joint between the body and the cab for any signs of movement. Check that the sealing media are sound.

#### 2. Windows

##### Window Fitments and Operation

Check that the window glazing rubber or seal is in good condition and that there is no sign of deterioration or cracking. Check that the windows open and close easily and smoothly. On top hung windows ensure that the fixing of the top hinge rail is satisfactory. Check that there is a good weather seal when the window is closed and latched. Ensure all catches and stays operate satisfactorily. Repair or replace any defective parts.

#### 3. External Doors

##### Security

Check hinges and catches for satisfactory operation and ensure that the doors are held securely shut when latched. Check that keys and internal latches lock the doors properly. Check that any device designed to hold the door in an open position is fitted correctly and operates positively.

##### Seals

Ensure that the door seals are in good general condition and are free from cracking and other signs of deterioration. Check that when the door is closed it provides a weather tight seal.





## Tribute/Imala Motorhome Annual Checklist

### Tribute/Imala Motorhome Annual Checklist

#### 4. Internal Doors

##### Security

Check that the hinges and catches are in good condition and operate properly. Ensure that the doors are securely shut when latched.

##### Safety

Check that any device to hold door closed can be operated from both sides of the door to enable it to be opened in an emergency.

#### 5. Chassis or Under-body Attachments

##### Under-floor Water Tank Mountings

Check that the mounting frames are fixed securely to the body. Check that any tank release fastenings are free from rust and corrosion and they operate smoothly. If necessary, remove rust with a wire brush, treat with a rust inhibiting solution and lubricate joints.

##### Spare Wheel

Remove spare wheel and check for damage. Check tyre pressure. Check that the mounting is securely attached to the body. Check for satisfactory spare wheel retention.

#### Wheel boxes

Check for damage, corrosion, water seepage, or signs of tyre rubbing.

#### 6. Attachments to Body Exterior

##### Skylights

Check the general condition, security and that the sealing has not deteriorated.

##### Roof racks and Ladders

Check general condition and that they are securely attached to the body. Check roof for signs of damage around the rack.

##### Mouldings and Trims

Check the security of fixings. Check the seals have not deteriorated.

#### 6. Attachments to Body Exterior

##### Flue Terminals and Air Vents

Make sure that these are not blocked. Check the security of the fixings. Check the seals have not deteriorated.

#### 7. Internal

##### Body Seepage

Examine for signs of moisture staining in areas under windows, sides of roof and in corners which might indicate water seepage. Use a moisture meter if unsure.

##### Furniture

Check that all furniture is securely fixed. Make sure that the door hinges, catches and stays operate smoothly.

##### Dinette Seat and Beds

Check seat bases for signs of damage and ensure fixings are secure. Make up the beds according to the manufacturer's instructions and check for rigidity and safety.

#### Curtains, Blinds and Nets

Check that the tracks are secure and without movement. Check that the curtains draw freely without snagging. Check the operation of the blinds and/or nets. Check the fly screens in the skylights and air vents.

#### Cab Seats

Where cab seats form part of the living area and/or bed layout, check that they are attached securely. Make sure that the seat slides, swivels and seat backs operate smoothly and easily.

#### Fire Extinguisher

Check the condition and the expiry date. If the date has expired or the extinguisher is partly exhausted, replace.

#### 8. Gas Systems

##### Cylinders and Regulators

Check the compatibility of cylinders and regulators. Ensure that your regulator controls the gas to the correct pressure for the type of cylinder in use.

Check that the air vents and gas drain hole in the floor of the cylinder compartment are free from obstruction. Check that the seals on all the internal doors are in good condition and fit properly.

#### Hosing and Piping

Check flexible hoses for cracking and condition. Check the date stamped on them has not passed. If the expiry date is close or passed, have the hoses replaced. Check all rigid piping for adequate support and any damage.

#### Appliances

As a guide checking the gas appliances can be summarised as follows:

- Cleaning: Where appropriate, remove cover(s) to gain access to exchanger. Remove any build up of fluff or other foreign matter. Re-assemble and test operation. Clean flame-viewing window.
- Operation of controls: Check all knobs etc are secure on their spindles and that they work smoothly. Check that the appliance works properly by using normal controls without forcing. If the gas taps are stiff to operate, ease them open with an approved LPG grease.



## Tribute/Imala Motorhome Annual Checklist

### Flame Structure

- Pilot flames should burn quietly and cleanly.
- Refrigerator: When the fridge gas control is turned to maximum the flame colour should be predominantly blue.
- Water heater: The main burner should burn blue and of even height.
- Ovens: Flames should be of even height and burn quietly. The colour should be mainly blue/green but there will be yellow tips to the flames as the burner heats up.
- Grill burners: Flames may develop yellow tips as they heat up, especially when using butane.
- General comments: A flame lifting away from the burner indicates that the pressure is too high. A yellow flame causes sooting and indicates the pressure is too low. If these faults occur, recheck the regulator, cylinders and pipes, adjust as necessary.
- Flues: Check security of fixings, attachments to appliances and flue terminals. Check for damage and corrosion. Check for gas leakage into the vehicle.

### 9. Gas Systems

#### Flame Structure

- Flame failure device (FFD): Check for satisfactory operation by the following method: after the appliance has been checked, allow time for the thermocouple to cool. Try to relight the appliance by turning it on without pushing the gas control knob in. If the appliance does not light the FFD is working.
- Security: Check that all appliances are securely fixed to the vehicle/ furniture and that no 'play' is present. Where applicable check that the gas pipes are properly attached and there are no signs of leaks.



### 10. Water System

Before operating the water system, check the following items visually for signs of leakage.

#### Fresh Water Tank/Container

Check condition. Fill tank and check for leaks. Check external filler and filler pipe to tank. Check venting. Check presence and condition of filler cap.

#### Waste Water Tank

Check that the drain tap is clear and working properly. Make sure that the drain hose is present and in good condition.

#### Pump Filter

When applicable, remove filter, clean and replace. Check the in-line pump for security of fixing and condition. Check that the pump inlets and outlets are clear and not obstructed. Check security of fixing and condition of delivery hose and electric cable.

#### System Check

Operate the pump and check all piping for leaks. Operate all taps and shower.

If a hot water system is fitted, it can be checked for leaks using cold water.

**Please note aerated water from a tap could be caused by a leak on the suction side of the pump.**

#### Waste Water System

- Allow water to run through drain pipes: check for leaks and satisfactory draining from sinks etc.
- Couplings and fluids: Avoid confusion by making sure proper markings are used: Blue for fresh water and red for waste water. Check that the filler positions are correctly designated: 'Petrol', 'Diesel' and 'Water' as appropriate.

### 11. Electrical System

Extra Low Voltage 12v (Excluding vehicle electrics).

- Batteries: Check the condition of any battery including connections, wire, fuses and relays connected with domestic electrics.
- Wiring: Examine all visible wiring for damage or wear. Check that all connections are safe.
- Fuses and Holders: Check that all fuses and fuse holders protecting the domestic electrics are satisfactory. Check that fuse ratings are compatible with the appliances being protected.

- Appliances: Inspect all appliances for signs of damage, overheating or wear. Check the security of the fixings. Test the operation of each appliance.
- Mains System 230v: Inspection and certification of the 230v system should only be carried out by a suitably qualified electrician.





## Guarantee

### Warranty, maintenance & servicing

#### Auto-Trail Warranty

For total piece of mind your Auto-Trail vehicle is covered by a comprehensive warranty that covers the base vehicle, the habitation compartment and the body integrity. For full terms and conditions please visit the Auto-Trail website for further details.



#### Maintenance & Servicing

It is your responsibility to ensure that your motorhome is maintained in a legal and roadworthy condition at all times following the manufacturers' recommended service schedule, (i.e. Fiat or Ford chassis and driveline components, and Auto-Trail's recommendations for habitation components, fixtures and fittings).

You must ensure that the habitation part of your motorhome has an Annual Habitation Service within 90 days prior to or 30 days after the vehicle's anniversary of the original date of registration. The 5th Annual Service must be carried out before the expiry of the 60-month period from the original date of purchase. These services must be carried out by an Auto-Trail Service Centre, an Auto-Trail dealer (preferably the original selling dealer) or a VAT-registered AWS (Approved Workshop Scheme) approved workshop. You will be responsible for all charges made for Annual Habitation Services. If the Annual Habitation Service is performed by an Auto-Trail Service Centre, then Auto-Trail accepts that the Annual Service has been performed correctly. If the Annual Habitation Service is performed by an unauthorised repairer or service Centre, or if the Annual Service has not been performed in accordance with the requirements of the

warranty, or work has been performed on your motorhome that is defective or faulty, then Auto-Trail may not be obliged to perform any work under an Auto-Trail Warranty. If the Body Integrity Warranty extension was purchased at the point of 1st registration the 10th annual service must be completed before is 10th anniversary, prior to the 120th month.

Original VAT invoices, check sheets and damp reports must be retained as proof that all Annual Habitation Services have been carried out, showing the date of the habitation services. It is vital that you retain these documents, as they will be required in the event of a warranty claim; failure to demonstrate you have complied with these servicing requirements will usually invalidate your warranty cover.

For full terms and conditions please refer to the Auto-Trail website.

#### Warranty & Roadside Assist

Your Fiat or Ford chassis is covered by it's own comprehensive warranty and roadside assist policy. For full terms and conditions please contact your local Fiat or Ford dealership depending on the type of chassis you have.

## Aftercare

MODEL	OVERALL LENGTH	OVERALL WIDTH <small>(mirrors folded)</small>	OVERALL HEIGHT		MAX GROSS WEIGHT	MASS IN RUNNING ORDER	MAXIMUM TOWABLE WEIGHT	GROSS TRAIN WEIGHT	NO. OF BERTHS <small>(std vehicles)</small>		PASSENGER SEATS <small>(std vehicles)</small>
			(LOW LINE / SUPER LOW)	HI-LINE					(LOW LINE / SUPER LOW)	HI-LINE	
F 60	5.99 m	2.35 m	2.88 m	N/A	3500 kg	2860 kg	1000 kg	4500 kg	N/A	2	1
F 62	5.99 m	2.35 m	2.88 m	N/A	3500 kg	2870 kg	1000 kg	4500 kg	N/A	2	1
F 70	7.34 m	2.35 m	2.88 m	N/A	3500 kg	3000 kg	1000 kg	4500 kg	N/A	4	1
F 72	7.34 m	2.35 m	2.88 m	N/A	3500 kg	3000 kg	1000 kg	4500 kg	N/A	4	1
F 74	7.34 m	2.35 m	2.88 m	N/A	3500 kg	2990 kg	1000 kg	4500 kg	N/A	4	1
IMALA 615	6.34 m	2.35 m	3.03 m	3.10 m	3500 kg	3050 kg	1250 kg	4750 kg	2	4	1
IMALA 625	6.34 m	2.35 m	3.03 m	3.10 m	3500 kg	3060 kg	1250 kg	4750 kg	2	4	1
IMALA 720	7.06 m	2.35 m	3.03 m	3.10 m	3500 kg	3140 kg	1250 kg	4750 kg	4	6	3
IMALA 730	7.26 m	2.35 m	3.03 m	3.10 m	3500 kg	3240 kg	1250 kg	4750 kg	4	6	1
IMALA 732	7.26 m	2.35 m	3.03 m	3.10 m	3500 kg	3200 kg	1250 kg	4750 kg	4	6	1
IMALA 734	7.26 m	2.35 m	3.03 m	3.10 m	3500 kg	3260 kg	1250 kg	4750 kg	4	6	1
IMALA 736	7.26 m	2.35 m	3.03 m	3.10 m	3500 kg	3140 kg	1250 kg	4750 kg	4	6	3
IMALA 736 G	7.26 m	2.35 m	3.03 m	3.10 m	3500 kg	3140 kg	1250 kg	4750 kg	4	6	3

Important Notes

The Mass in Running Order (MRO) is the mass of the empty vehicle including a 75kg allowance for the driver, the diesel tank and lpg bottle full. The MRO is calculated with the freshwater tank empty on all models and one 13kg LPG bottle. Should you choose to travel with your freshwater tank full or with additional gas the MRO figure should be adjusted accordingly.

All weights quoted are for standrad vehicles. Please take care to ensure that you have allowed for the masses of all items you intend to carry in the motorcaravan. EG Passengers, optional equipment, essential habitation and personal effects such as clothing, food, pets, bicycles etc.

MODEL	TYRE SIZE COLD (BARS)	TYRE PRESSURES – COLD (BARS)	
		FRONT AXLE	REAR AXLE
F60 / F62 / F70 / F72 / F74	235/65R16C	3.5	4.5
IMALA RANGE	225/75R16C	5.5	5.5

Tolerances

The MRO figure quoted is representative of a number of similar specification models weighed on our fully calibrated axle weighbridge. Because of the materials and construction techniques used in the manufacture of our motorhomes, all weights quoted by us are subject to the tolerances allowed in Regulation (EU) No. 1230/2012 (+/-5%).

**WARNING** - under no circumstances should the maximum gross weight of the vehicle be exceeded.

HEATING GRADE

All Auto-Trail vehicles have a minimum heating classification of grade 3. This means that your vehicle can maintain an average temperature of at least 20 degrees centigrade when the outside temperature minus 15 degrees centigrade.

GAS INPUT OF APPLIANCES

Whale Space Heater = 2.0kw. Whale Water Heater = 1.35kw. Truma Combi 4 = 4.8kw. Truma Combi 6 = 6.8kw. Cooker (3 gas burners) = 8.3kw. Fridge = 0.19kw.







FAULT CODE	CAUSE	REMEDY
W255 H	Heater has no 12V power supply	Ensure that the 12V power supply is available
	No connection between heater and control panel	Make connection between heater and control panel
W302 H W418 H	Low voltage. Battery voltage is too low < 10.0V	Charge battery. If necessary, replace old battery
W303 H W411 H	Risk of low voltage. Battery voltage is too low < 10.4V	Charge battery
W401 H	Summer mode with empty water container	Switch heater off and allow it to cool. Fill boiler with water
W402 H	Warm air temperature exceeded:	
	Not all warm air ducts are connected	Check whether the 4 warm air ducts are connected
	Warm air outlets blocked	Check the individual outlet openings
	Circulated air intake blocked	Remove the circulated air intake blockage
W407 H	No 230V operating voltage	Restore 230V operating voltage
	230V fuse defective	Replace 230V fuse (see Combi operating instructions)
W408 H	No gas supply in Mix mode	Check gas supply. See fault # 507 (electronic heating continues in Mix mode)

FAULT CODE	CAUSE	REMEDY
W412 H	Window above cowl open (window switch)	Close window
E 507 H E 516 H E 517 H	Gas cylinder empty	Replace the gas cylinder
	Gas cylinder or quick-acting valve in the gas supply line closed	Check gas supply and open valves
	Gas pressure regulation system iced up	Use regulator heater (EisEx)
	Butane content in the gas cylinder too high	Use propane. Butane is unsuitable for heating, particularly at temperatures below 10 °C.
	Combustion air infeed or exhaust outlet is sealed	Inspect openings for obstructions (slush, ice, leaves, etc.) and remove any obstructions
	Gas pressure regulation system faulty	Inspect / replace gas pressure regulation system
E 607 H	Max. number of fault resets reached	Wait 15 minutes and reset fault
E 621 H	Room temperature sensor or cable faulty	Inspect the room temperature sensor cable, replace if faulty
E 624 H	Frost Control heating element has a short circuit	Disconnect heating element plug from electronic control unit. Replace heating element
E 632 H	Overheating protection has been triggered	Reset overheating protection (see Combi operating instructions)

If these measures do not remedy the malfunction or if fault codes are displayed that you cannot find in the troubleshooting guide, contact Truma Service.





## Notes

[illegible]

## Notes

This image shows a full page of blank, lined paper. It features approximately 20 horizontal blue or grey lines spaced evenly apart, typical of notebook paper. The lines extend across the entire width of the page, leaving small margins at the top and bottom. There are no vertical lines, text, or other markings on the page.



## Notes

This image shows a single sheet of white paper with horizontal ruling lines. The lines are evenly spaced and run across the width of the page. There are no margins, text, or other markings on the paper.



## OWNER'S HANDBOOK:

Auto-Trail VR Limited.  
Trigano House, Genesis Way, Europarc,  
Grimsby, North East Lincolnshire, DN37 9TU, United Kingdom.  
Main Reception: Tel +44(0) 1472 571000 Fax +44(0) 1472 571001  
[www.auto-trail.co.uk](http://www.auto-trail.co.uk)  
Parts Department: Tel +44(0) 1472 571003 Fax +44(0) 1472 571002